

LATCHED CONTACTOR



MICRO TYPE: MXW MICRO

SINGLE POLE PULSE OPERATED 100A AC LOADS.

FEATURES



- Miniature flame-retardant (UL94V0) insulated package
- Designed for control from electronic equipment
- Typically used in control of electricity supply or load management
- Custom main terminal connections
- Bi-stable operation - only consumes power when changing state
- Highly repeatable switching time
- Fault handling capability

SPECIFICATION

MAIN CONTACT RATING at 250V AC		AMPS
AC1	Heating/slightly Inductive	100A
AC5b	Incandescent Lighting	30A

Short Circuit through-fault capability to IEC 1036/7/8

DIMENSIONS (mm)	H	W	D
Maximum (excluding main terminals and optional fixings)	47	39	16

Fixings are via four M4 clearance holes on the extremities of the case.

MAIN TERMINALS

These are copper and can be specified with tapped M4, M5 or M6 holes. The supporting case is designed to allow a copper conductor or ring terminal to exit in two planes as required. Variants are available with extended copper-work, which can be supplied ready formed to minimise the number of joints within an assembly.

AUXILIARY CONTACTS

An add-on housing for a SPCO contact set is available. The auxiliary is switched in tandem with the main contacts. The contacts are suitable for loads up to 2A at 30V DC and 3A 125V AC.

CONTROL CIRCUIT

The MXW utilises a single coil that requires a pulse of current in one direction to close the main contacts and in the opposite direction to open the main contacts.

MAIN OPERATING VOLTAGE (Recommended pulse 10ms - 250ms)	DC	Full-Wave Rectified AC (50-60Hz)	Half Wave Rectified AC (50-60Hz)
80V coil (470 ohms) 12V coil (10 ohms)	70-250V 10-50V	70-250V rms. 10-50V rms.	90-250V rms. 12-50V rms.

The control connections are provided from a flying lead which can have stripped, tinned ends for easy soldering to a control circuit board, or a fitted 2-way plug for connection to a PCB mounted header. The plug type would form part of the customised specification. Alternatively the contactor is available with two, 1mm-diameter pins projecting through the case for direct PCB connection.

ORDERING EXAMPLE

MXW 100 /X1 FLn D

Type Reference

Rating

Custom Reference

Direct PCB pin Connection

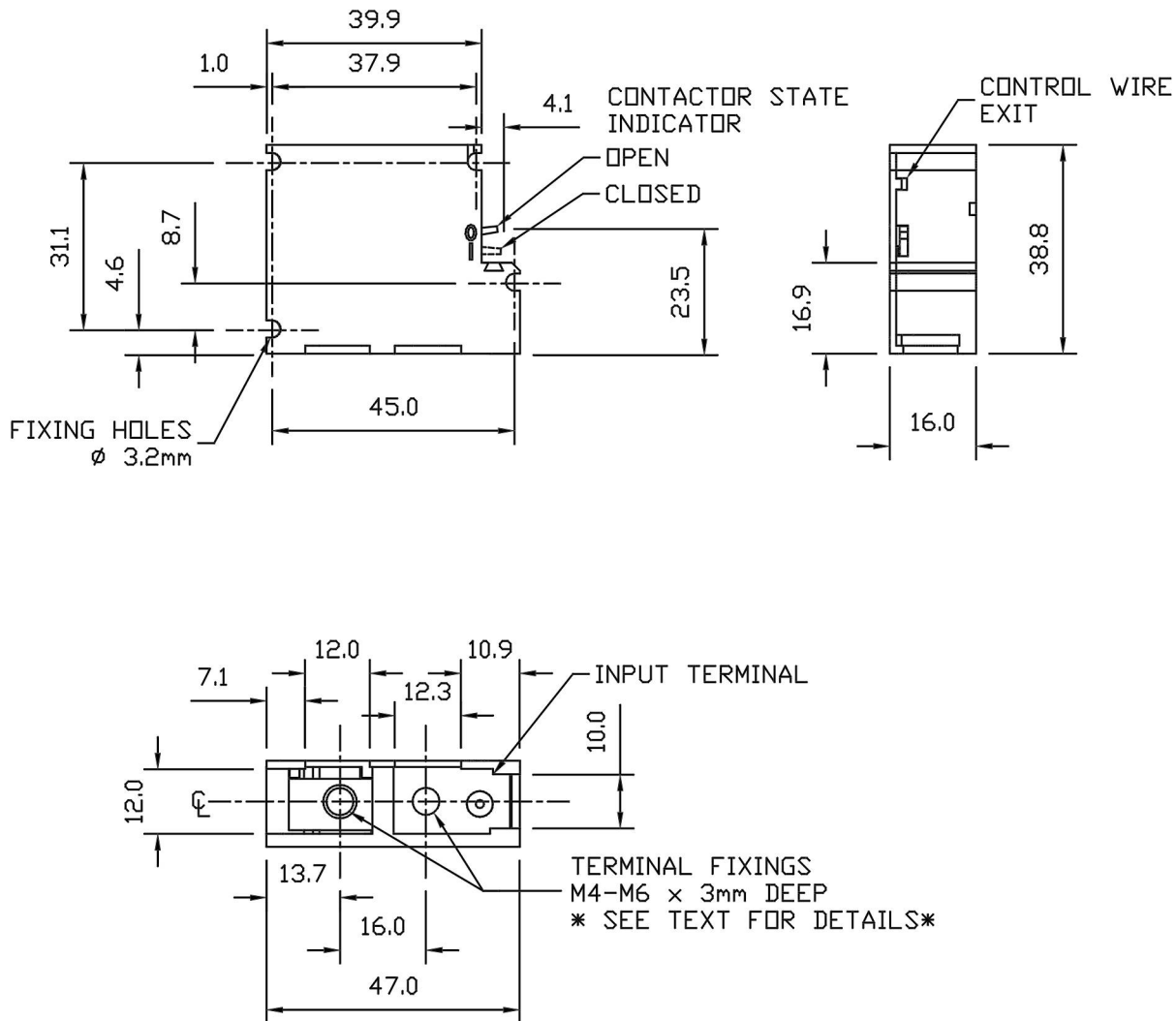
Flying lead length
(n - inches)

LATCHED CONTACTOR



MICRO TYPE: MXW MICRO

OUTLINE DIMENSIONS (mm)



RELATED PRODUCTS

Enbray has a well established name for reliable electrical load management and manufactures a wide range of load switching devices ranging from miniture pulse operated devices up to 1250A fully automatic changeover systems.

Specific customer requested configurations can be produced which are supplied with all control wiring in place and therefore require the minimum of installation time. These include Safety Contactors, Emergency Changeover Systems, Multipole Contactors, Contactors with normally closed main poles etc. Details available on request.